



F: Connected Vehicle Cloud based on oneM2M platform

oneM2M Showcase, 2014-12-09

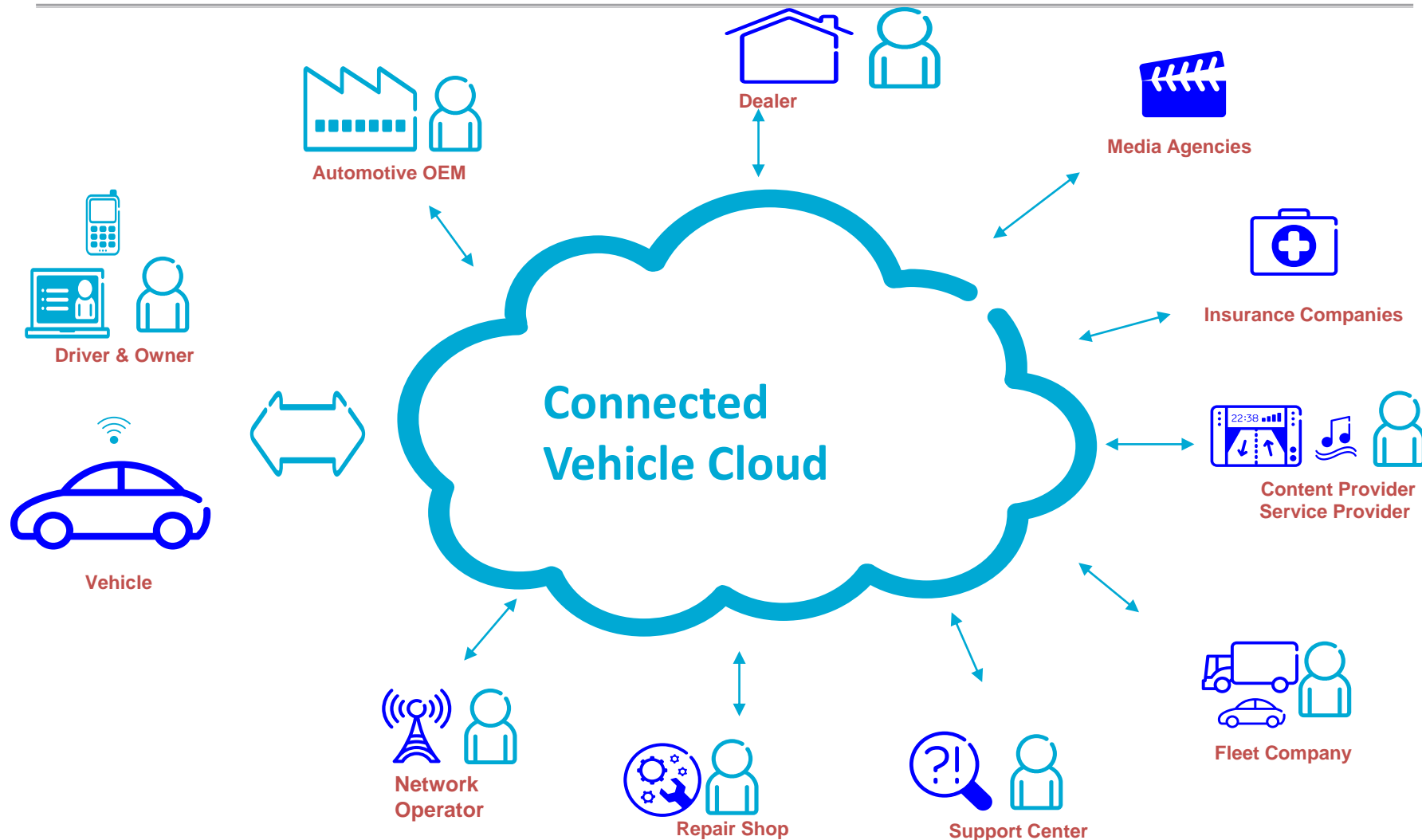
Source: Ericsson

F: Connected Vehicle Cloud based on oneM2M platform



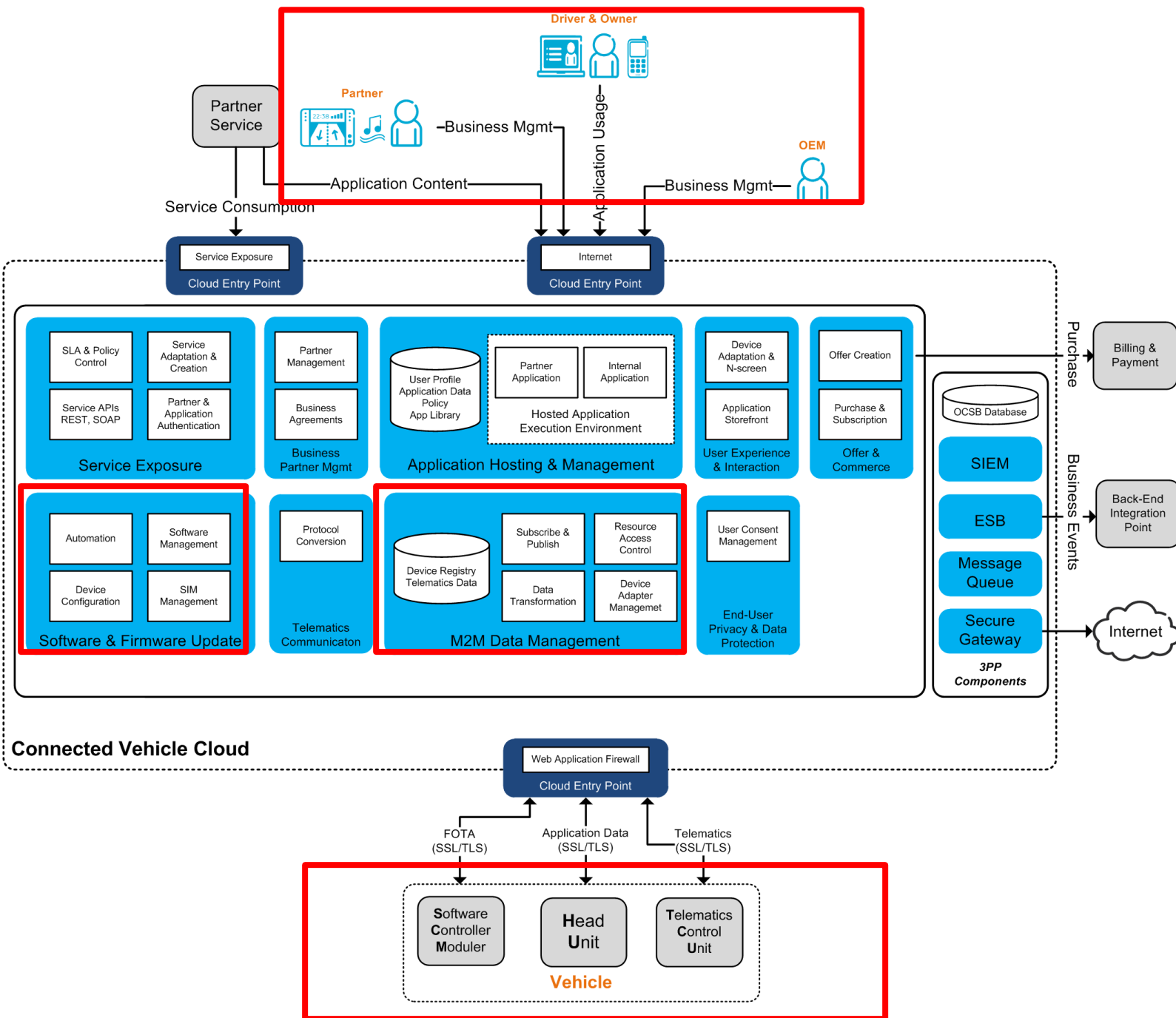
ERICSSON

Connected Vehicle Cloud

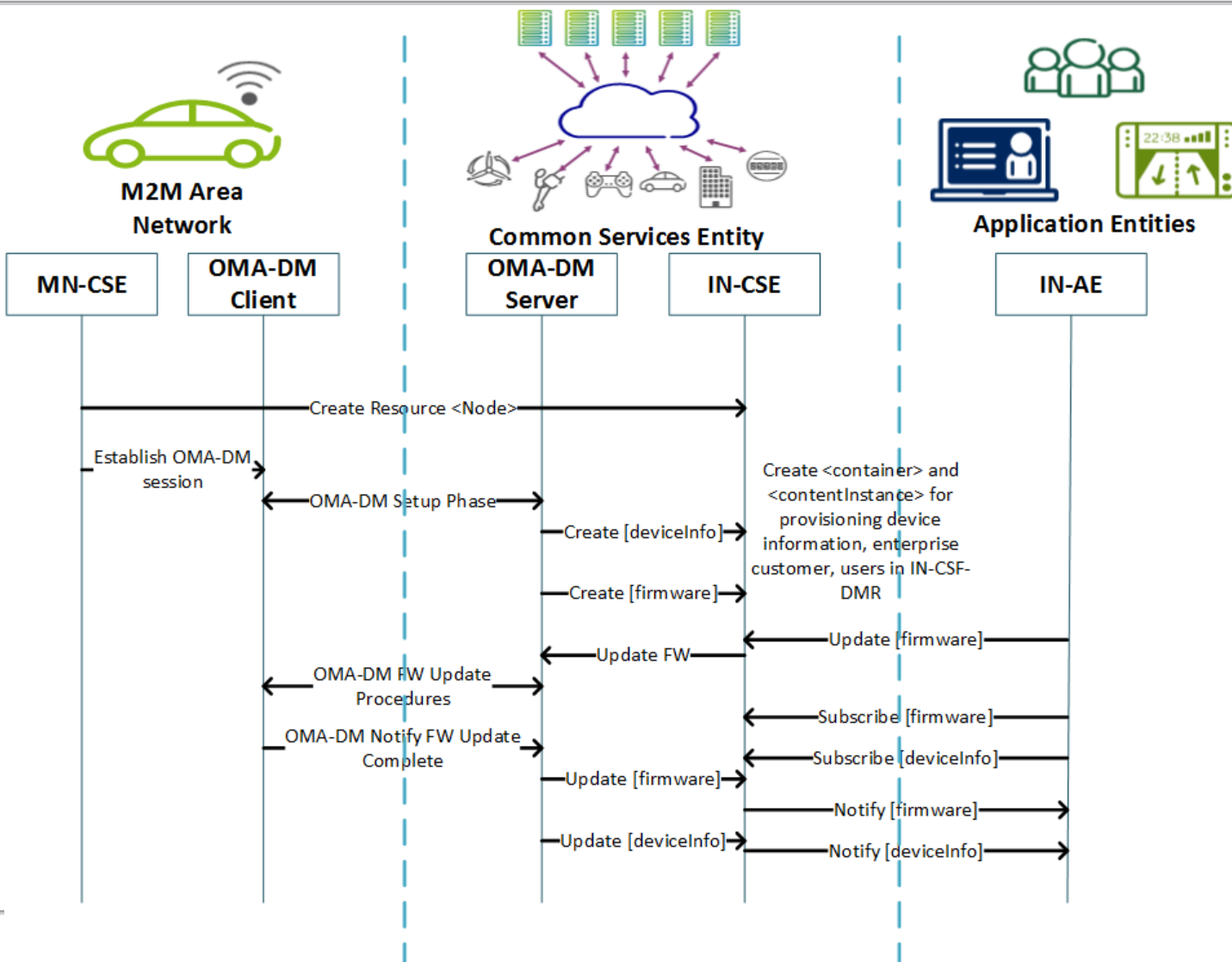


Issues and Challenges

- In order to take advantage of the opportunities of the Connected Vehicles the Automotive OEM needs to overcome a number of technical challenges. Some of these are:
 - Managing protocol complexity
 - Continuous evolution of services and capabilities
 - Remotely manage and upgrade vehicle firmware



Sample Flow



How oneM2M addresses issues

- oneM2M addresses much of the complexity and provides scalable future proof solution.
 - RESTful interfaces, focus on minimizing the payload
 - Support for Device Management mappings: OMA-DM, TR-069 and LWM2M
 - Support for multiple bindings: HTTP, CoAP and MQTT
 - Definition of Reference Points, Resources and Attributes allows easy integration and interoperability

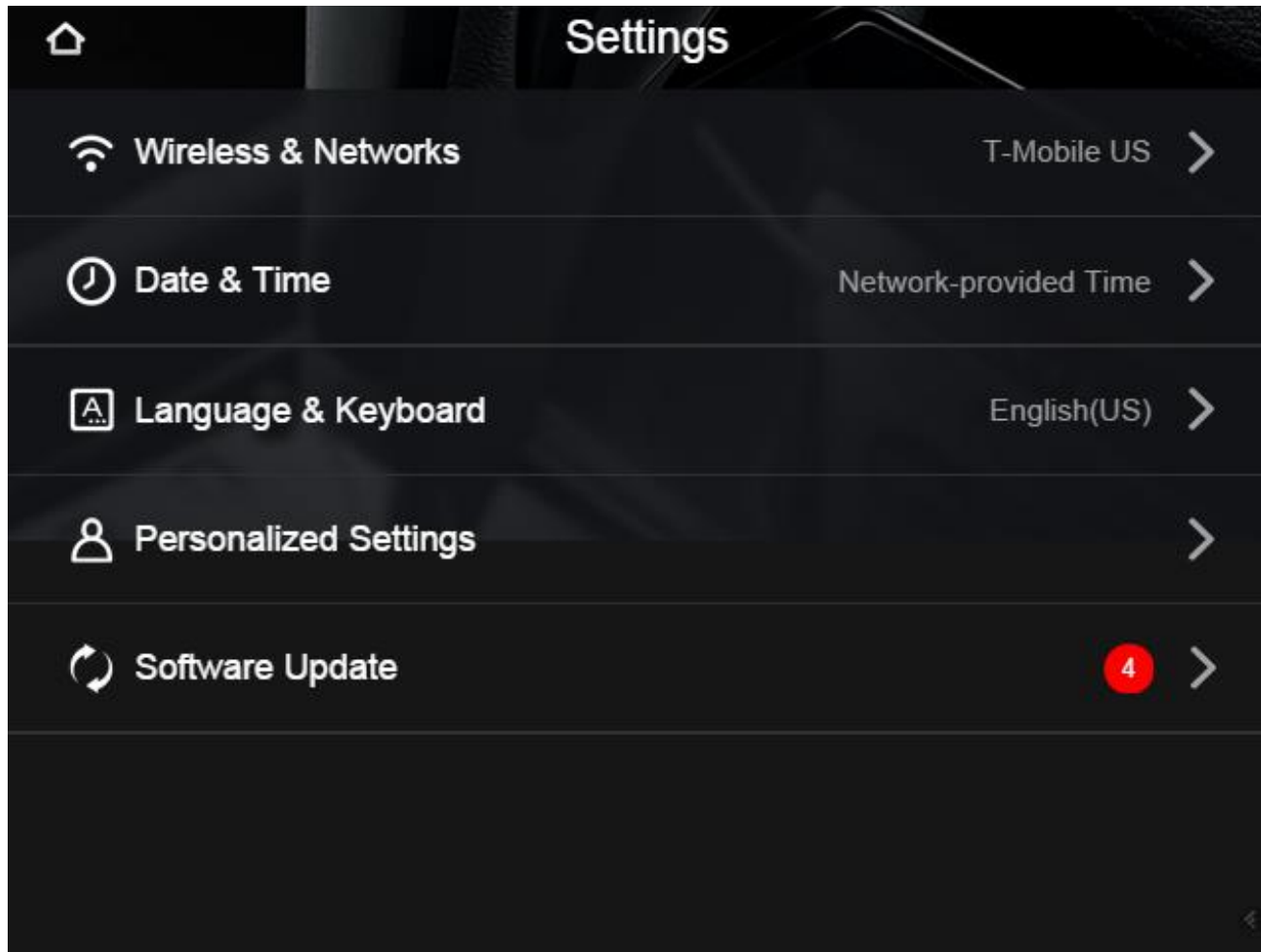
Connected Vehicle Cloud Demo

- In this demo we show examples of:
 - Device Management capabilities (Firmware Over-The-Air)
 - Data Management & Repository capabilities
 - Device Management and Data Management & Repository capabilities interworking


Update Notification on App




Software updates available



Available software upgrade



Available Software Upgrade




Bluetooth

Bluetooth V2.0 is available 25MB

This software upgrade improves the Bluetooth Communication Unit.

Upgrade




Seat Control Unit

Seat Control Unit V3.0 is available 15MB

This software upgrade improves the seat control software.

Upgrade




Telematics Communication Module

Telematics Communication Module V2.0 is available 15MB

This software upgrade improves the Telematics Communication Module used to send and receive information to and from the cloud.

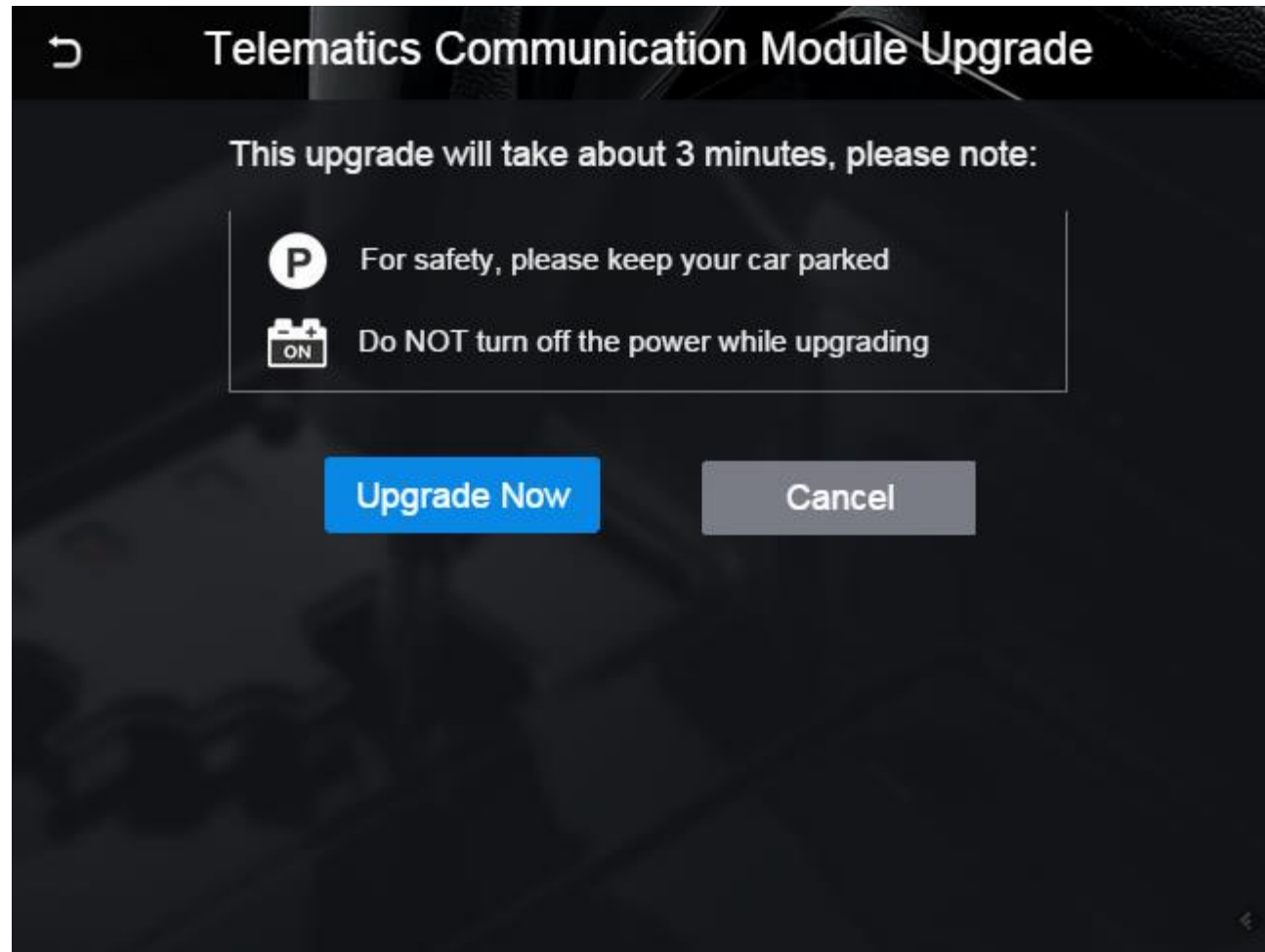
Upgrade



Airbag Control Unit

Airbag Control Unit V2.0 is available 5MB

Telematics Comm. Upgrade



Telematics Comm. Upgrade

