

**Figure 8.6.4.1.2.1-1: General procedure to support network status report between oneM2M and 3GPP network**

**Step-1: CRUD Request**

AE can send CRUD Request to retrieve network status with providing Location Area, Duration, Threshold.

**Step-2: CRUD Response**

The IN-CSE sends a Response to the AE to acknowledge acceptance of the Request.

**Step-3: Request for network status**

The IN-CSE sends an Request message to the NSE including Location Area, Duration, Threshold. Duration indicates the time for which a continuous reporting is requested. The absence of Duration indicates a one-time reporting. The IN-CSE, based on operator policies, may chose a different Threshold value than the one indicated by the AE in step 1.

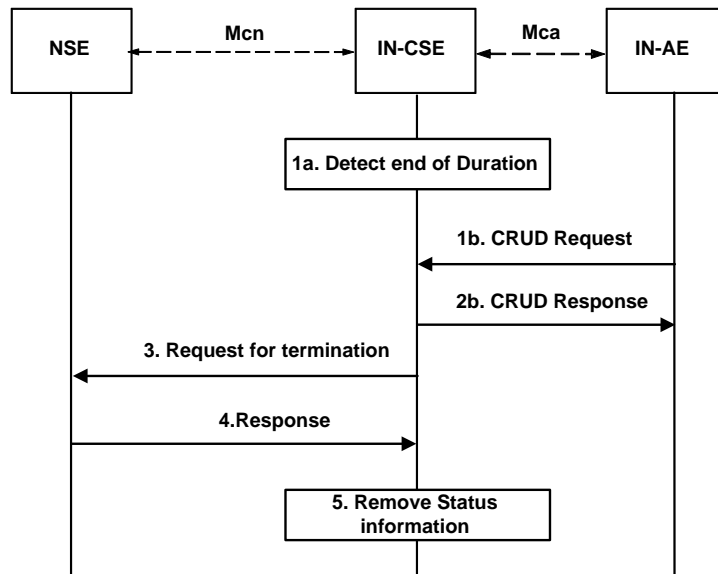
**Step-4: Report network status**

The NSE sends an one-time or continuous Report to the IN-CSE including depending on the operator configuration and current NSE knowledge, the congestion status for radio access network belonging to the Location Area requested by the IN-CSE.

**8.6.4.1.2.2 Removal procedure for continuous reporting of network status**

This procedure is used for termination of the continuous reporting of network status. It can be triggered by the AE at any time before the Duration is over. The IN-CSE will trigger this procedure when the Duration is over. Figure 8.6.4.1.2.2-1 illustrates the procedure.





**Figure 8.6.4.1.2.2-1: General procedure to support network status report between oneM2M and 3GPP network**

**Step-1a: Detect end of duration**

The IN-CSE detects that the requested Duration for an ongoing continuous reporting of network status is over.

**Step-1b: CRUD Request**

When the AE needs to terminate an ongoing continuous reporting of network status, the AE sends a Request message to the IN-CSE.

**Step-2b: CRUD Response**

If the AE requested to terminate an ongoing continuous reporting of network status in step 1b, the IN-CSE sends a Response message to the AE.

**Step-3: Request for termination**

The IN-CSE sends a Request message to the NSE to an ongoing continuous reporting of network status.

**Step-4: Response**

The NSE removes the related instructions and stops monitoring the radio access network belonging to the Location Area for a change in the congestion status. Afterwards, the Response is sent to the IN-CSE.

**Step-5: Remove status information**

The IN-CSE removes all network status information related to this continuous reporting.

---

# History

<b>Publication history</b>		
V2.0.0	30-Aug-2016	Publication